

8D
5N

藏王 雪怪

ZAO SNOW MONSTER

栃木 | 山形 | 宮城 | 埼玉

TOCHIGI | YAMAGATA | MIYAGI | SAITAMA

藏王树冰
Zao Ice Tree

JPZH08



1 吉隆坡 ✕ 成田

于吉隆坡国际机场集合办理登记手续，然后乘搭班机飞往日本。抵达成田机场后，转运至机场酒店休息。

2 成田 - 65公里 - 川越 - 139公里 - 鬼怒川

川越

又称“小江戸”，这里的地标是川越钟楼，在这里您可以领略约120年前的日本风貌。星巴克也是很值得前往的打卡点，当地的酿啤酒非常值得一试。

日光东照宫

内供奉着最著名的武士领袖德川家康。1999年列入世界文化遗产之一。

鬼怒川温泉

我们将在最著名且古老的温泉老区过夜。

3 鬼怒川 - 250公里 - 仙台

大内宿

到处都是300多年历史的建造物，此外还有传统茅草屋顶和两侧皆有流水的街道。

仙台一番街

许多药妆店都集中在这，想要采购日本货物的人可以在这里购物。

4 仙台 - 110公里 - 米泽

银山温泉

此旅游圣地有独特的日本风情，非常吸引人。沿着清澈的河川边建立的木造旅馆都约有百年历史。

白银瀑布

走到温泉街最深处能近距离观赏瀑布下落的磅礴水花。

季节安排

★ 藏王缆车

遥望山形盆地的全貌，感受山形藏王四季不同的美丽，从缆车上360度全景观赏百万树冰【雪怪】的壮观景象。

※ 视天气状况而定

5 米泽 - 248公里 - 宇都宫

摘水果乐

体验现摘现吃当地新鲜水果。（视水果季节而定）

会津若松城

又称鹤之城，建于约630年前，是当地的象征之一。它也被选为日本百大名城之一。

猪苗代湖（拍照留念）

赤牛绘画工坊

绘制专属于您的手工艺品。

6 宇都宫 - 128公里 - 东京

湖城Outlet

这里拥有多家日本国内外时下最流行，最值得选购的名牌。

Aqua city台场

在这里您可以欣赏到自由女神像和彩虹大桥，俯瞰东京市中心。这里有约60家商店，以休闲时尚为主，提供丰富的购物体验。

台场巨型钢弹（拍照留念）

途径台场彩虹大桥

7 东京 - 64公里 - 成田 ✕ 吉隆坡

阿美横丁

东京物价高昂，不过在这您可以以十分实惠的价格买到任何物品。在此的销售手法与日本的一般销售方式不同，买卖方可以享受你来我往的杀价乐趣。

浅草寺

东京最古老的寺庙，也是必游热门景点。这座寺庙的标志是门前悬挂着的巨大“雷门”大灯笼。

原宿

日本年轻人的潮流圣地，是购物、娱乐和体验东京多元文化的好地方。表参道和青山则是成熟稳重人士的购物天堂，拥有高端时装精品店、创新设计公司 and 时尚咖啡馆。

今天，我们将乘搭当日班机返回家园。

8 抵达吉隆坡

※ 行程可能会以最终确定的航班而前后调动。



赤牛
Akabeko

大内宿
Ouchi Juku

1 KUALA LUMPUR ✈️ NARITA

Assemble at Kuala Lumpur International Airport for departure flight to Japan.

Transfer to airport hotel for rest after arrival.

2 NARITA – 65km – KAWAGOE – 139km – KINUGAWA

📍 Kawagoe

Is also known as Little Edo. Here you can fully appreciate the style of Japan about 120 years ago. The landmark here is the Kawagoe Clock Tower, and Starbucks coffee is the best place to check in. The local brews are well worth a try.

📍 Nikko Toshogu Shrine

Houses the most famous samurai leader Tokugawa Ieyasu. It's listed one of the world heritages in year 1999.

📍 Kinugawa Onsen

Overnight in the most famous and oldest hot spring in Nikko.

3 KINUGAWA – 250km – SENDAI

📍 Ouchijuku

Is filled with buildings that are over 300 years old, with traditional thatched roofs and streets with running water on either side.

📍 Sendai Ichiban Street

Here has the largest concentration of drugstores in the city. Anyone who wants to buy Japanese goods can shop here.

4 SENDAI – 110km – YONEZAWA

📍 Ginzan Onsen

It has a unique Japanese style and is very attractive. The wooden hotels built along the clear river are nearly a century.

📍 Shirogane Waterfall

Passes through the deepest part of the hot spring street. You can watch the majestic water spray of the waterfall up close.

Seasonal Arrangement

Zao Ropeway (Early Jan - End Feb)

You can view the entire basin and experience the beauty of Yamagata Zao in different seasons. Enjoy a 360-degree panoramic view of the million ice trees [Ice Monsters] from the cable car.

※ Subject to weather conditions

5 YONEZAWA – 248km – UTSUNOMIYA

📍 Fruit Picking Activities

Enjoy a local fruit farm. (Subject to fruits seasonality)

📍 Aizuwakamatsu Castle

Also known as Tsuruno castle, it was built about 650 years ago and is a local symbol. Tsuruno Castle was also selected as one of the top 100 famous castles in Japan.

📍 Lake Inawashiro (Photo Stop)

📍 Akabeko Painting Workshop

Draw your own craft.

6 UTSUNOMIYA – 128km – TOKYO

📍 Lake Town Outlet

Besides international brand, you can find local Japanese brand as well. From time to time, there will be added value promotion.

📍 Aqua City Odaiba

At here you can enjoy views of the Statue of Liberty and the Rainbow Bridge, overlooking the centre of Tokyo.

📍 Odaiba Gundam (Photo Stop)

📍 Passing by Odaiba Rainbow Bridge

7 TOKYO – 64km – NARITA ✈️ KUALA LUMPUR

📍 Ueno Ameyoko

Tokyo is expensive, but in Ueno Ameyoko, you can find bargains on almost everything. This makes for plenty of lively interactions not typical of most retails in Japan.

📍 Asakusa Temple

Oldest Buddhist temple and a must-visit in Tokyo. The hallmark of this temple is the huge red lantern with a Thunder Gate carved on it.

📍 Harajuku

A trendy haven for Japanese youth, perfect for shopping, entertainment, and experiencing Tokyo's diverse culture. Omotesando and Aoyama are shopping paradises for mature and sophisticated individuals, featuring high-end fashion boutiques, innovative design firms, and stylish cafes.

Proceed to airport for your flight back home and big farewell to Japan.

8 ARRIVAL KUALA LUMPUR

※ Sequence of the itinerary is subject to change according to the final flight confirmation.





行程亮点 HIGHLIGHT

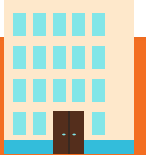
- | | | | |
|--|--|---|--|
| <ul style="list-style-type: none"> 川越钟楼 日光东照宫 温泉体验 大内宿 仙台一番街 银山温泉 白银瀑布 藏王游览车 台场巨型钢弹 | <ul style="list-style-type: none"> 摘水果体验 会津若松城 猪苗代湖 赤牛绘画工坊 湖城Outlet Aqua city台场 阿美横町 浅草寺 原宿 | <ul style="list-style-type: none"> Kawagoe Nikko Toshogu Shrine Onsen Experience Ouchijuku Sendai Ichiban Street Ginza Onsen Shirogane Waterfall Zao Ropeway Odaiba Gundam | <ul style="list-style-type: none"> Fruit Picking Activities Aizuwakamatsu Castle Lake Inawashiro Akabeko Painting Workshop Lake Town Outlet Aqua City Odaiba Ueno Ameyoko Asakusa Temple Harajuku |
|--|--|---|--|



美食 GOURMET

酒店自助餐或套餐 / 东北风味套餐 / 和牛烧烤任吃

Hotel Buffet or Set Cuisine / Tohoku Traditional Cuisine / Wagyu BBQ All You Can Eat



酒店 HOTEL

			早餐 Breakfast	午餐 Lunch	晚餐 Dinner
D1	-	-	-	-	-
D2	鬼怒川温泉 (1晚) Kinugawa Onsen (1 Night)	鬼怒川御苑酒店或同级 Kinugawa Gyoen Hotel or similar	机上用餐 Meal on Board	✓	✓
D3	仙台 (1晚) Sendai (1 Night)	仙台大都会酒店或同级 Metropolitan Hotel Sendai or similar	酒店 Hotel	✓	✓
D4	米沢 (1晚) Yonezawa (1 Night)	米沢山景酒店或同级 Hotel Monto View Yonezawa or similar	酒店 Hotel	✓	✓
D5	宇都宫 (1晚) Utsunomiya (1 Night)	小山格兰德酒店或同级 Oyama Grand Hotel or similar	酒店 Hotel	✓	✓
D6	东京 (1晚) Tokyo (1 Night)	阪急第一酒店 Ours Inn Hankyu or similar	酒店 Hotel	✓	✓
D7	-	-	酒店 Hotel	✓	✓
D8	-	-	机上用餐 Meal on Board	-	-



川越 / Kawagoe



会津若松城 / Azuwakamatsu Castle



阿美横町 / Ameyoko

旅行必备:

护照或签证 - 团员有责任确保护照有效期需至少6个月(从返程日期算起), 并且取得必要的签证和准证。
旅游保险 - 出发前, 建议您购买全面的旅游保险。

条款:

- 行程、膳食、酒店住宿和交通可能会有所变动, 恕不另行通知。
- 若出现无法预测的特殊情况特别是在旅游旺季期间, UVSB将保留更改或取消行程的权利。
- 若UVSB的宣传手册或任何传播媒介, 出现任何形式的印刷失误或遗漏, 本公司一概不负责, 并且保留更正的权利。
- 每位参与UVSB团的成员, 必须为自身安全或行为负责。若出现无法预测的特殊情况 (例如: 交通延误/取消、疾病、天气、示威、战争等等), 因而引发额外支出的问题, UVSB一概不负责, 旅客需自行负责额外的费用。
- 详情条款, 请参阅单据网页或浏览 <https://ubingo.my/home/terms.php>
- 以上图片仅供参考, 请以实物为准。

备注: UVSB为UbinGO Vacations Sdn Bhd.

日本团 - 附加条款:

- 所有行程以中文讲解为主。若有需要, 将提供简单的英语翻译。
- 如预定三人间, 提供的额外床垫为滚动式折叠床。
- 团费仅适用于大马公民, 外国公民则需缴付额外费用。

Tentative Flight Details - Subject to Change

Travel Essentials:

Passport & Visas - Each tour member is responsible to ensure their passport is valid for at least six (6) months from the return date of the trip and all necessary visas and permits have been acquired.
Travel Insurance - It's essential that you take out comprehensive travel insurance before travel.

Terms & Conditions:

- Itineraries, meals, hotels, and transportation are subject to change without prior notice.
- UVSB reserves the right to make changes to or cancel the itinerary at any time due to unforeseen circumstances, especially during peak periods or in the event of a force majeure.
- UVSB is not responsible for omissions, printing and/or presentation errors in brochures or in any media where such information may be presented; UVSB reserves the right to make corrections as required.
- Every person participating in UVSB's tours shall travel at his/her own risk. UVSB shall not be held liable to any person for additional expenses that may be incurred due to delays or changes in any transport services, sickness, weather, strikes, war or other causes.
- For other terms & conditions, refer overleaf of invoice or visit <https://ubingo.my/home/terms.php>
- All pictures shown are for illustration purpose only.

Note: UVSB refers to UbinGO Vacations Sdn Bhd.

Japan Tours - Additional Terms & Conditions:

- Tours are conducted in Mandarin, with simple translation in English if required.
- For booking triple-share rooms please note that additional bed is based on "roll-away" bed.
- Tour fare quoted is for MALAYSIAN, the non-Malaysian surcharge applied.

For Agent Use Only:

Updated Date: **AUG 2024**