

8D  
7N



# 江南

## MEMORIES OF JIANGNAN

杭州 | 上海 | 苏州 | 无锡 | 乌镇 | 拈花湾小镇

HANGZHOU | SHANGHAI | SUZHOU | WUXI | WUZHEN | NIANHUA BAY





## 第1天：吉隆坡 ✕ 杭州

### 第1天：吉隆坡 ✕ 上海 - 175 km - 杭州

#### 📍 德寿宫

德寿宫是南宋太上皇的居所。近日，在流经城南的古运河西岸，平凡的小巷中，新建了一道红墙。红墙成了杭州网红的打卡点。

#### 📍 钱江新城灯光秀

### 第2天：杭州 - 161 km - 苏州

#### 📍 西湖（含游船）【长桥公园】

西湖是中国杭州的一个淡水湖。它被三个堤道分成五个部分。湖内有许多寺庙、宝塔、花园和天然/人工岛屿。

#### 📍 杭州龙井茶艺

#### 📍 雷峰塔（外观）

#### 📍 湖滨路商业街

#### 📍 盘门瑞光宝塔（外观）

#### 📍 山塘集市

### 第3天：苏州 - 98 km - 拈花湾小镇

#### 📍 寒山寺

寒山寺是位于中国江苏省苏州市姑苏区的一座佛教寺院。

#### 📍 金鸡湖风景区

金鸡湖风景区，是国家5A级风景名胜，是中国最大的城市湖泊公园，是苏州21世纪新人间天堂的标志。

#### 📍 苏州园林尚湖风景区（含乘坐竹筏）

中国古典园林设计力求以缩影的方式重现自然景观，在古城苏州的九座园林中得到了最好的体现。

#### 季节限定

桃花，樱花（3月15日 - 4月15日）

※按每年气候不同会有所改变，以上花期不能完全保证准确。

#### 📍 无锡珍珠厂

#### 📍 拈花湾禅意小镇

拈花湾的主题是禅宗，景观和建筑的各个方面都经过精心设计，旨在为游客注入宁静和内心的平和感。

### 第4天：拈花湾小镇 - 40 km - 无锡

#### 📍 灵山胜境大佛（含电瓶车）

大佛位于江苏省无锡市太湖北岸。它是中国乃至世界上最大的佛像之一。灵山梵宫建筑采用汉藏风格，融合了摩崖石窟和传统佛教建筑元素。



水乡乌镇  
Wuzhen Water Village

### 第5天：无锡 - 132 km - 乌镇

#### 📍 长广溪国家湿地公园

湿地公园位于蠡湖西南岸的石塘桥上。在中国建设部将其列入第二批国家级城市湿地公园。

#### 📍 惠山古镇寄畅园

寄畅园是华南著名的中国古典园林，1988年1月13日被列为国家级文物保护单位。

#### 📍 水乡乌镇

乌镇是长江以南的六大著名古代水乡之一。

### 第6天：乌镇 - 138 km - 上海

#### 📍 南京路 + 全球最大星巴克旗舰店

#### 📍 上海浦江游船 + 游外滩

### 第7天：上海 (团号：CHGN08)

#### 📍 陆家嘴空中走廊

四大建筑：东方明珠，环球金融中心，上海中心大厦，金茂大厦。

#### 📍 城隍庙商业中心

### 第7天：上海 - 12 km - 迪士尼乐园

- 12 km - 上海 (团号：CHGD08)

#### 📍 上海迪士尼乐园游览包括往返交通和入园门票

※上海迪士尼乐园游览将替代上海市区游览的行程安排。

### 第8天：上海 (- 175 km - 杭州)

✕ 吉隆坡

※以下行程仅供参考。准确行程将以最后确认的航班时间、迪士尼乐园门票与住宿为准。观光行程的序列将会有所更动。

灵山胜境大佛  
Lingshan Grand Buddha

## D1: KUALA LUMPUR ✕ HANGZHOU

### D1: KUALA LUMPUR ✕ SHANGHAI

– 1 7 5 km – HANGZHOU

#### Deshou Palace

Deshou Palace was the residence of Emperor Taishang during the Southern Song Dynasty. Recently, on the west bank of the ancient canal that flows through the south of the city, a new red wall was built in the ordinary alleys. The red wall became a check-in point for Internet celebrities in Hangzhou.

#### Qianjiang New City Light Show

## D2: HANGZHOU – 1 6 1 km – SUZHOU

#### West Lake (Includes Cruise Tour) [Long Bridge Park]

West Lake is a freshwater lake in Hangzhou, China. It is divided into five sections by three causeways. There are numerous temples, pagodas, gardens, and natural/artificial islands within the lake.

#### Hangzhou Longjing Tea Farm

#### Leifeng Pagoda (Exterior View)

#### Hubin Road

#### Ruiguang Tower (Exterior View)

#### Shantang Street

## D3: SUZHOU – 9 8 km – NIANHUA BAY

#### Hanshan Temple

Hanshan Temple is a Buddhist temple and monastery in Gusu District of Suzhou, Jiangsu, China.

#### Jinji Lake Scenic Area

Jinji Lake Scenic Area, National 5A Scenic Spot, is China's largest urban lake park and a symbol of Suzhou as the new paradise on earth in the 21st century.

#### Shanghu Classical Chinese Garden (Include Bamboo Raft Boat)

Classical Chinese Garden design, which seeks to recreate natural landscapes in miniature, is nowhere better illustrated than in the nine gardens in the historic city of Suzhou.

#### SEASONAL ARRANGEMENT

Peach Blossom, Sakura (Mar 15 - Apr 15)

※ Flower blooming dates are subject to seasonal changes

#### Pearl Factory

#### Nianhua Bay

The overarching theme of Nianhua Bay is Zen, and every aspect of the landscape and architecture has been meticulously designed to instill a sense of tranquility and inner peace within its visitors.

## D4: NIANHUA BAY – 4 0 km – WUXI

#### Lingshan Grand Buddha (Includes Electric Car)

The Grand Buddha is located on the north shore of Lake Tai, near Wuxi, Jiangsu. It is one of the largest Buddha statues in China and also in the world. The Lingshan Brahma Palace is built in a Sino-Tibetan style, combining cliff caves and traditional Buddhist architectural elements.



## D5: WUXI – 1 3 2 km – WUZHEN

#### Changguangxi National Wetland Park

Wetland Park is located in Shitang Bridge on the southwest bank of Lihu Lake. Ministry of Construction of the People's Republic of China included it in the second batch of national urban wetland parks.

#### Huishan Jichang Garden

Jichang Garden is a famed Chinese classical garden in South China, and it was claimed as a national protected location of historical and cultural relics on 13 January 1988.

#### Wuzhen Water Village

Wuzhen is one of the six famous ancient water towns south of the Yangtze River.

## D6: WUZHEN – 1 3 8 km – SHANGHAI

#### Nanjing Street + The Largest Starbucks in the World

#### Shanghai Huangpu River Cruise + Sightseeing Shanghai Bund

## D7: SHANGHAI (Tour Code: CHGN08)

#### Lujiazui Corridor

Four major buildings: Oriental Pearl Tower, Shanghai World Financial Center, Shanghai Tower, Jinmao Tower.

#### Shanghai Town God's Temple

## D7: SHANGHAI – 1 2 km – DISNEYLAND THEME PARK

– 1 2 km – SHANGHAI (Tour Code: CHGD08)

#### The Shanghai Disneyland tour includes round-trip transportation and admission tickets to the park

※ Please note that the Shanghai Disneyland tour will replace the Shanghai city tour on the itinerary.

## D8: SHANGHAI (– 1 7 5 km – HANGZHOU) ✕ KUALA LUMPUR

※ The final day-by-day schedule is subjected to final schedule, flight schedule, Disneyland Them Park and local situation arrangements.



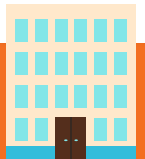




## 行程亮点 HIGHLIGHT



## 美食 GOURMET



## 酒店 HOTEL

- 西湖 (含游船)
  - 湖滨路商业街
  - 山塘集市
  - 寒山寺
  - 苏州园林 (含乘坐竹筏)
  - 拈花湾禅意小镇
  - 灵山大佛 (含电瓶车)
  - 水乡乌镇
  - 上海浦江游船 + 游外滩
  - 南京路 + 全球最大星巴克旗舰店
  - 陆家嘴空中走廊
  - 城隍庙商业中心
- \*自选上海市区游或迪士尼乐园

- West Lake (Includes Cruise Tour)
  - Hubin Road
  - Shantang Street
  - Hanshan Temple
  - Shanghu Classical Chinese Garden (Includes Bamboo Raft Boat)
  - Nianhua Bay
  - Lingshan Grand Buddha (Includes Electric Car)
  - Wuzhen Water Village
  - Shanghai Huangpu River Cruise + Sightseeing Shanghai Bund
  - Nanjing Street + The Largest Starbucks in the World
  - Lujiazui Corridor
  - Shanghai Town God's Temple
- ※ Optional to choose Shanghai City tour or Disneyland Them Park

新浙派风味 / 知味观点心 / 松鼠鱼风味 / 宴遇苏式面套餐 /  
酱排骨风味 / 海鲜自助餐 / 沪上风味 / 小笼包

Zhejiang Cuisine / Zhiweiguan Dim Sum / Squirrel Fish Flavor /  
Suzhou Noodle Set / Pork Ribs Flavor / Seafood Buffet  
/ Hu Cuisine / Xiao Long Bao

			早餐 Breakfast	午餐 Lunch	晚餐 Dinner
D1	杭州 (1晚) Hangzhou (1 Night)	锦华庭大酒店或同级 Jinhuating International Hotel or similar	X	X	✓
D2	苏州 (1晚) Suzhou (1 Night)	苏苑饭店或同级 Su Yuan Hotel or similar	酒店 Hotel	✓	✓
D3	拈花湾小镇 (1晚) Nianhua Bay (1 Night)	拈花湾客栈或同级 Nianhua Inn or similar	酒店 Hotel	✓	X
D4	无锡 (1晚) Wuxi (1 Night)	新梨庄大酒店或同级 Golden Pear Hotel or similar	酒店 Hotel	✓	✓
D5	乌镇 (1晚) Wuzhen (1 Night)	伊甸园铂金大酒店或同级 Eden Platinum Hotel or similar	酒店 Hotel	✓	X
D6	上海 (2晚) Shanghai (2 Nights)	国展宝龙丽筠大酒店或同级 Radisson Exhibition Center Shanghai or similar	酒店 Hotel	✓	✓
D7			酒店 Hotel	X	X
D8	-	-	酒店 Hotel	X	X



酱排骨风味  
Pork Ribs Flavor



宴遇苏式面套餐  
Suzhou Noodle Set

### 旅行必备:

护照或签证 – 团员有责任确保护照有效期需至少6个月(从返程日期算起), 并且取得必要的签证和准证。  
旅游保险 – 出发前, 建议您购买全面的旅游保险。

### 条款:

1. 行程、膳食、酒店住宿、交通和自费项目可能会有所变动, 恕不另行通知。
2. 若出现无法预测的特殊情况特别是在旅游旺季期间, UVSB将保留更改或取消行程的权利。
3. 若UVSB的宣传手册或任何传播媒介, 出现任何形式的印刷失误或遗漏, 本公司一概不负责, 并且保留更正的权利。
4. 每位参与UVSB团的成员, 必须为自身安全或行为负责。若出现无法预测的特殊情况 (例如: 交通延误/取消、疾病、天气、示威、战争等等), 因而引发额外支出的问题, UVSB一概不负责, 旅客需自行负责额外的费用。
5. 详情条款, 请参阅单张网页或浏览 <https://ubingo.my/home/terms.php>
6. 以上图片仅供参考, 请以实物为准。

备注: UVSB为UbinGO Vacations Sdn Bhd.

### 中国团 – 附加条款:

1. 所有行程以中文讲解为主。
2. 如预订三人间, 提供的额外床垫为滚动式折叠床。
3. 团费仅适用于大马公民, 外国公民则需缴付额外费用。
4. 车上购物 – 为了您的方便起见, 车上会售卖当地小吃及伴手礼。
5. 指定购物站 – 所有团员必须停留在指定的购物站约1小时, 但不强制购买任何商品。若任何团员没有停留在有地点, UVSB有权利额外征收费用。

### Tentative Flight Details - Subject to Change

### Travel Essentials:

Passport & Visas – Each tour member is responsible to ensure their passport is valid for at least six (6) months from the return date of the trip and all necessary visas and permits have been acquired.  
Travel Insurance – It's essential that you take out comprehensive travel insurance before travel.

### Terms & Conditions:

1. Itineraries, meals, hotels, transportation and optional tour are subject to change without prior notice.
2. UVSB reserves the right to make changes to or cancel the itinerary at any time due to unforeseen circumstances, especially during peak periods or in the event of a force majeure.
3. UVSB is not responsible for omissions, printing and/or presentation errors in brochures or in any media where such information may be presented; UVSB reserves the right to make corrections as required.
4. Every person participating in UVSB's tours shall travel at his/her own risk. UVSB shall not be held liable to any person for additional expenses that may be incurred due to delays or changes in any transport services, sickness, weather, strikes, war or other causes.
5. For other terms & conditions, refer overleaf of invoice or visit <https://ubingo.my/home/terms.php>
6. All pictures shown are for illustration purpose only.

Note: UVSB refers to UbinGO Vacations Sdn Bhd.

### China Tours – Additional Terms & Conditions:

1. Tours are conducted in Mandarin.
2. For booking triple-share rooms please note that additional bed is based on "roll-away" bed.
3. Tour fare quoted is for MALAYSIAN, the non-Malaysian surcharge applied.
4. In-coach Shopping – For your convenience, a variety of local snacks and gift are offered for sale on board the coach.
5. Compulsory Shopping Stops – All tour members are required to visit the compulsory shopping stops (approximately 1 hour) but are not obligated to purchase anything. UVSB reserves the right to collect a penalty additional cost should any tour member fail to visit the specified shopping stops.

For Agent Use Only:

Updated Date: MAR 2024

UbinGO Vacations Sdn. Bhd.

(Formerly known as Apple Flexi Holiday Sdn. Bhd.)

2nd Floor, Bangunan WSF, 42B & 42-1B, Jalan Sultan Ismail, 50250 Kuala Lumpur, Malaysia.

Reg No. 200501002258 (679304-T) (KPK/LN No. 5187)

03-2779 6899  
016-324 4899